

PARK HOUSE
1991
GARDEN



Horsham Park, a popular countryside area in Horsham's centre, has been improved by the delightful Park House Garden. This garden is the result of remarkable co-operation and goodwill from the District Council, local businesses and local disabled and visually impaired people.

The garden is notable for special features for the disabled and its horticultural excellence in a municipal setting. The strong yet modern layout complements the adjacent Georgian house, while the profusion of plants provides a parade of colour for all seasons.

This beautiful garden, nestled in Horsham Park's green acres, is truly available to all.

C O N T E N T S

1. BRIEF ACCOUNT OF PROJECT
2. CONTRIBUTORS TO THE PROJECT
3. SPECIAL FEATURES
4. LEAFLET
5. PLANTING PLAN
6. PHOTOGRAPHIC RECORD OF PROGRESS
7. LETTER OF THANKS FROM HORSHAM ACCESS COMMITTEE

1. BRIEF ACCOUNT OF PROJECT

Introduction

Remarkable co-operation and goodwill between the District Council, local businesses and target user groups has resulted in a marvellous scented garden with special features for the disabled and visually impaired in Horsham Town Park. The objective of the garden is to provide a feature of horticultural excellence which can be enjoyed by the less able-bodied as well as the general public and complement the adjacent historic buildings.

Description of Garden

The garden itself covers 0.1 ha (0.25 acres) which was formerly a poor quality vandalised rose garden between Park House, a Georgian listed building and Park House Coffee Shop, a renovated stable block. It has a simple formal layout with wide axial paths, a central sundial and corner fountain. This is softened by profuse informal planting.

Planting is in distinct colour schemes, blues, reds and purples to the sunny north; blues, greys and pinks in the centre; yellows, greys and whites in the shady south. Over 130 species of evergreen and deciduous trees, shrubs, herbaceous perennials and bulbs give striking foliage, flowers, fruits and scents all year round, even in deepest mid-winter.

The garden has numerous special features - paths which allow two wheelchairs to pass, with seating bays and a sealed gravel finish to give non-slip quality without being too rough for wheelchairs. Many paths are edged with tiles to provide tapping strips for long tapping canes and marble columns mark right angled turns for the visually impaired.

The centrepiece is a special sundial by local sculptor, John Skelton. It bears a Latin inscription which translates as "I count not the hours unless they be happy". The hour blocks have numbers carved into them so that sightless people can tell the time by feeling the difference in temperature between sunlit and shaded stones and tiles.

A raised bed of stone from a nearby demolished church has been provided along the northern edge of the garden to enable wheelchair visitors to touch the many aromatic foliage plants. A Georgian style stone fountain incorporating gargoyles from the church adds the sound of trickling water.

The garden has very easy access with no ramps or steps; close proximity disabled parking and a toilet for the disabled is available in the adjacent coffee shop.

Development of Garden

In 1989, the Sun Alliance Group sought a project to commemorate their 25th Anniversary in Horsham. They offered substantial financing for the project if its scope were broadened to include physically disabled. A project

development team was set up with an interactive design process among Council Officers and Members, Sun Alliance Directors, professional consultants of Horsham Access Committee Members to ensure that the finished product met the needs of the intended users.

On 7 January 1990, the first grass turf was cut by the Horsham Access Committee. Construction began immediately afterwards and continued until completion in spring 1991.

On 29 June 1991, the garden was formally opened by the Earl of Snowdon. He spoke of difficulties he had encountered in successfully persuading organisers of the famous Chelsea Flower Show in London to allow access to wheelchair and guide dog users and said that Park House Garden has set a tremendous example to other organisations and authorities.

Use of the Garden

The garden has since become extremely popular - on sunny days most of the seats are taken by people informally enjoying the ambience - chatting, eating lunch or reading.

Frequent organised visits to the garden by residents of homes for the elderly or disabled groups occur during the summer - see the photograph of the Steyning and District Association for the Disabled enjoying a cup of tea in the garden.

The horticultural value of the garden is also appreciated - for example, a day school on the Art of Garden Design was held in September 1991 by Sussex University and the Workers Educational Association. A leaflet and planting plan are available for visitors to gain an insight into the garden.

The garden has featured widely in the media. The opening ceremony was covered by TVS, Radio Mercury, BBC Radio Sussex and local newspapers. The Sunday Times Gardening Correspondent has interviewed the consultant landscape architect and the garden has featured in numerous local and national publications for the disabled, including the Roundabout Talking Newspaper.

Park House Garden is obviously stimulating much interest, providing not only an attractive pretty feature for local visitors to Horsham Park, but an excellent example of the type of recreation facility which modern society can provide for its disadvantaged members.

2. CONTRIBUTORS TO THE PROJECT

Horsham Access Committee

This represents the interests of disabled people in the Horsham District. Their main objectives are to advise the District and County Councils on all aspects of access provision for people with disabilities and to encourage greater general awareness of their needs and prompt more active assistance. They have also advised on many features of the Town Centre Development.

Three HAC representatives are members of the Park House Garden Design Team and gave comments and advice on the detailed design as it progressed. HAC's Treasurer, Mrs Sue Cheater carried out the turf cutting ceremony and many members attended the opening ceremony to introduce others to the special features of the garden.

Address: Mrs Norma Elson, Hon Secretary, Horsham Access Committee,
19 Pollards Drive, Horsham, West Sussex, RH13 5HQ

Horsham District Council

Second tier of local government with responsibility for approximately 200 square miles of West Sussex with predominantly rural character. HDC maintains numerous open spaces, a Nature Reserve and Country Park for the benefit of local residents and is committed to environmental enhancement and sympathetic management for nature conservation.

Horsham District Council were actively involved at all levels in the design and management of the project and contributed approximately one third of the total project cost of £92,000 and has assumed responsibility for future maintenance of the garden which is jointly funded by the Council and Sun Alliance.

Address: Horsham District Council, Park House, North Street, Horsham,
West Sussex, RH12 1RL Tel: 0403 64191, Fax: 0403 55728
(Contact: Yvonne Marsland, Countryside and Landscape Manager)

Sun Alliance Group

A substantial insurance company based in the United Kingdom with world-wide interests. A major employer in Horsham since the early 1960's, the company wished to make a contribution to the benefit of the local community to commemorate its 25 years in Horsham. Directors of the company were also actively involved in the Project Design Team contributing ideas, time, employment of the Consultant Landscape Architect and Quantity Surveyor plus a financial contribution of over two thirds of the total project cost. The company is also continuing to fund half of the cost of maintenance of the garden.

Address: Sun Alliance Group Properties, Property Development Division,
Egham Lodge, 24 Bridge Street, Leatherhead, Surrey, KT22 8BZ
Tel: 0372 379314, Fax: 0372 375257
(Contact: Russell Buckingham, Director)

Land Use Consultants

A leading environmental planning and design consultancy involved with major landscape and reclamation projects throughout the country. LUC have been employed by Sun Alliance on many successful projects in the Horsham area and have worked for Horsham District Council on Southwater Country Park and Southwater Business Park.

Projects are undertaken on an individual basis with strong emphasis being placed on a holistic and contextual approach with creative problem solving, value for money and active involvement of senior professionals.

LUC managed the detailed design, construction and implementation of the project in liaison with Council Officers, contributing valuable originality and expertise for substantially reduced fees.

Address: Land Use Consultants, Environmental Planners and Designers,
43 Chalton Street, London, NW1 1JB Tel: 071-383 5784,
Fax: 071-383 4798
(Contact: Richard Hannay - Principal)

John Shreeves and Partners

A London-based company of Quantity Surveyors and Property Managers which primarily deals with substantial commercial projects throughout the United Kingdom on behalf of institutional and commercial clients, including Sun Alliance.

This company provided quantity surveying services and financial control of the project, handling the tender process and final accounts for no charge.

Address: John Shreeves and Partners, Chartered Quantity Surveyors,
6 Turnmill Street, London, EC1M 5RR Tel: 071-251 2101,
Fax: 071-608 2388
(Contact: Gary Welfare, Associate)

DA Marketing & Communications

A professional London-based consultancy which specialises in design, advertising and public relations.

This company handled all press coverage and publicity for this project, made arrangements for special ceremonies and maintained visual records of progress.

Address: DA Marketing & Communications, 22 Chenies Street,
London, WC1E 7EQ Tel: 071-637 7866, Fax: 071-631 0739
(Contact: John Daulis, Managing Director)

Woodcross Developments Ltd

A medium-sized local company which deals with general building works throughout the Horsham area. They donated materials and enthusiastically carried out the practical implementation of the project using their own directly employed craft labour who incidentally are all Horsham residents.

Address: Woodcross Developments Ltd, Building Contractors,
5A Shelley House, The Bishopric, Horsham, West Sussex.
Tel: 0403 57442/62315, Fax: 0403 59379
(Contact: Rod Wallace, Manager)

Landscape Contractors

Architectural Garden Design

A small company specialising in hard and soft landscape works and arboriculture in the local area for private and institutional clients.

The company carried out all elements of the soft landscaping including provision of soil and nutrients, acquiring plants from nurseries around the country, planting and maintenance. The team really took the project to heart so that many extras were carried out at no cost and special mention must go to Paul Mort, a local landscape gardener.

Address: Architectural Garden Design, Griffins, Park Lane, West
Grinstead, Horsham, West Sussex Tel: 0403 864524,
Fax: 0403 864981
(Contacts: Tim Martin, Principal and Robert Mills, Consultant)

Tim Bennett Farm Services

A small local company which specialises in technical fencing works and customised specifications such as arbors, play features for handicapped children, wallaby and deer fencing and trellis work.

This company carried out the fencing works around Park House Garden to a very high standard contributing technical expertise and working for minimal fees.

Address: Tim Bennett Farm Services, The Rye, Hollands Lane,
Henfield, BN5 9QY Tel: 0273 495070, Fax: 0273 495039
(Contact: Tim Bennett)

Material Contributors

Redland Bricks

Headquarters are at Graylands near Horsham. They supplied the high quality hand made facing bricks used in the garden, together with decorative half-rounded wall copings, free of charge. These bricks with their creased and slightly irregular format create a pleasingly mellow and traditional impression.

Ibstock Bricks

Contributed paviers, charging only for delivery.

3. SPECIAL FEATURES

Special design features of the garden for disabled and visually impaired people.



'Sungod', the sundial sculpture by John Skelton which forms the central focal point of Park House Garden.



The large hour blocks in the sundial with their engraved Roman numerals that allow sightless people to tell the time by feeling the temperature difference between shade and light.

RIGHT: The tile edge trim to the pathways in the garden that acts as a tapping strip for visually impaired people using long tapping canes.

BELOW: One of the Aberdeen granite columns placed at right-angled corners within the garden as a clear marker for visually impaired people.

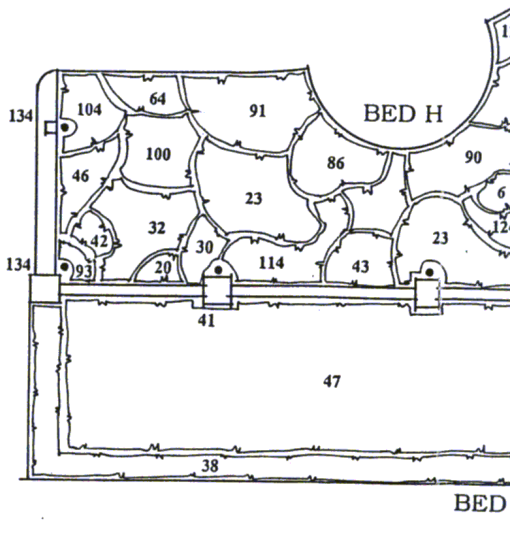
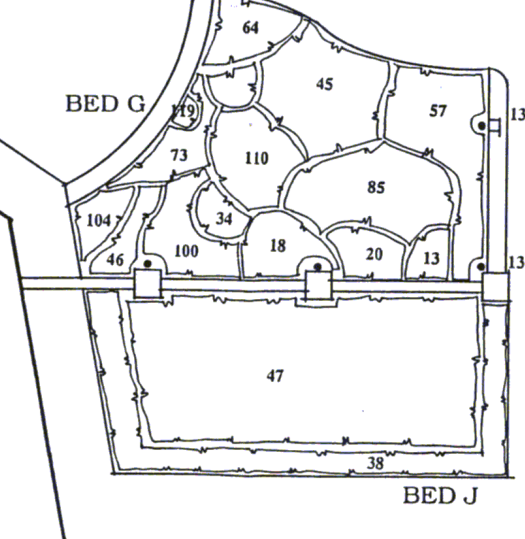
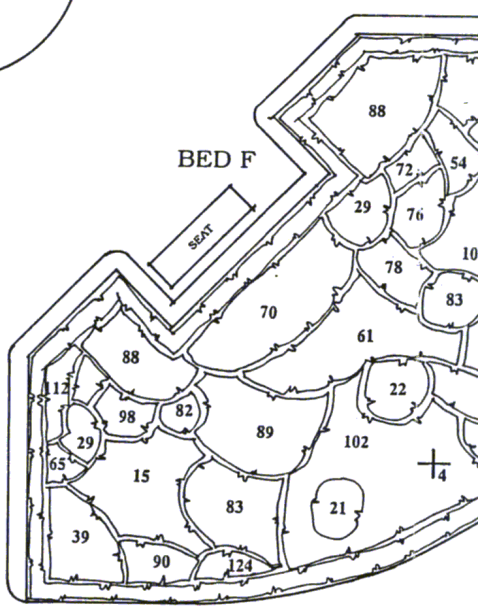
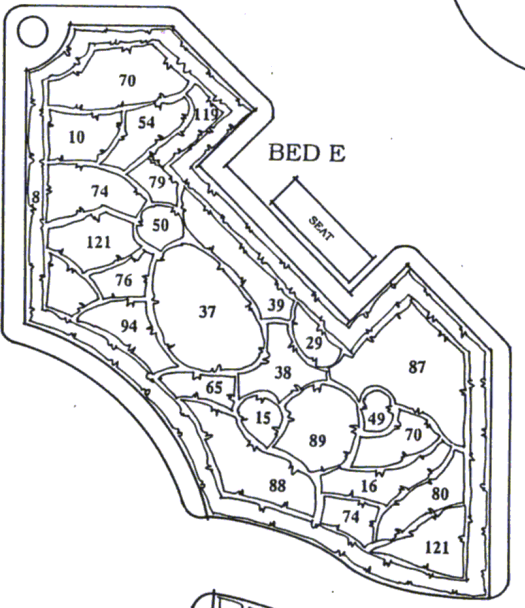
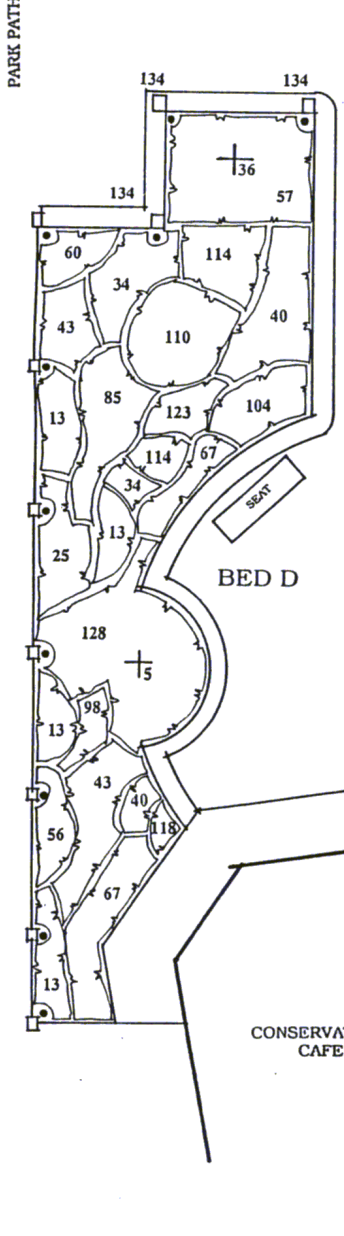
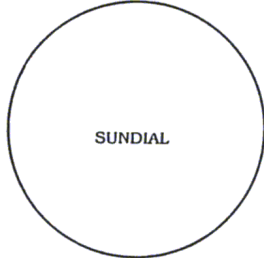
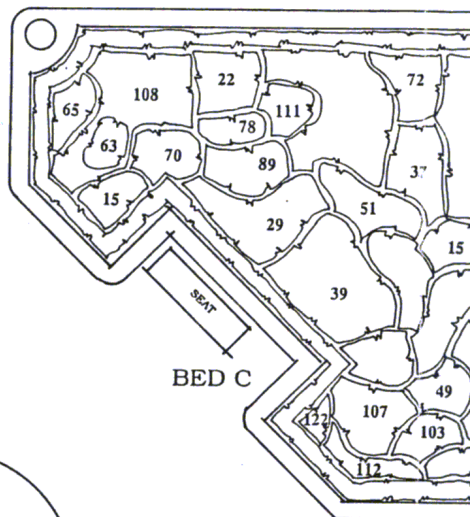
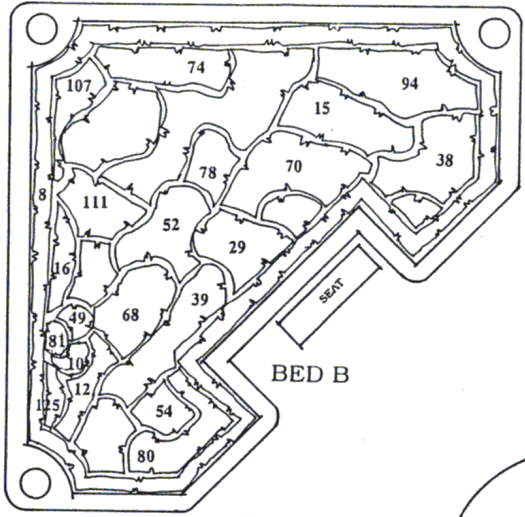
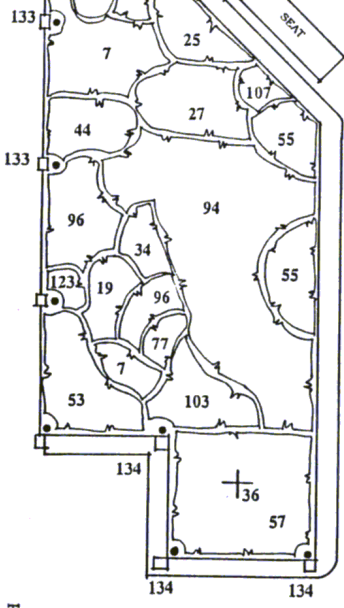
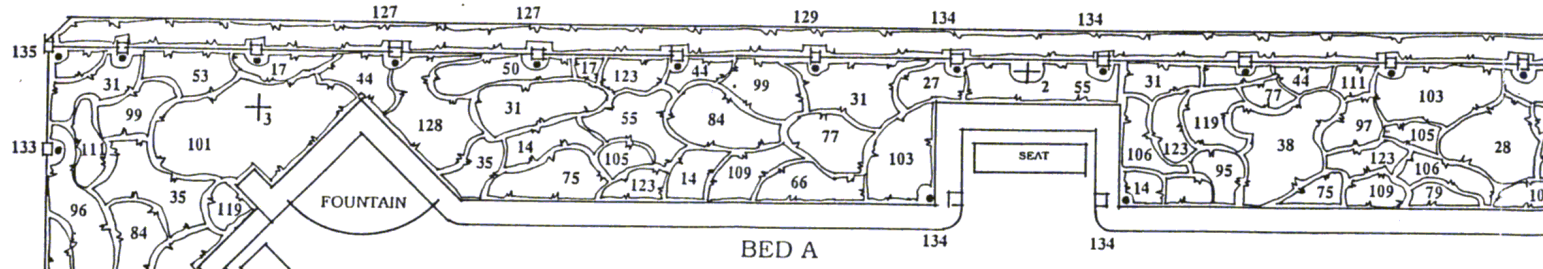


RIGHT: Flower beds raised to a convenient height for wheelchair users allowing them to touch the plants and enjoy more fully the aromatic foliage.

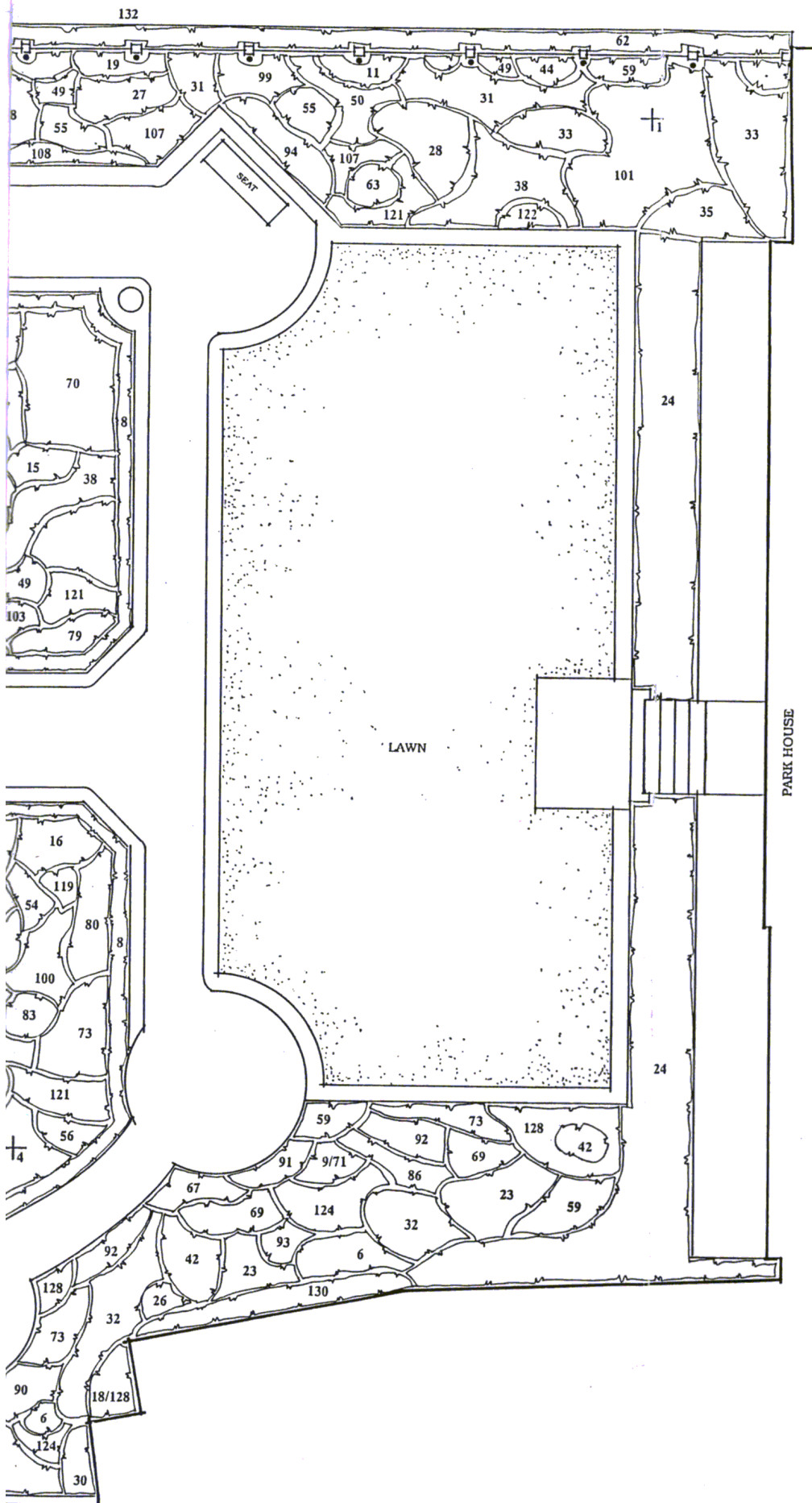
BELOW: Wheelchair bays have been incorporated beside the seats in the garden allowing wheelchair users to sit alongside friends and other visitors.



5. PLANTING PLAN



BED



PARK HOUSE GARDEN PLANTING PLAN



LAND USE CONSULTANTS JANUARY 1992 ↑

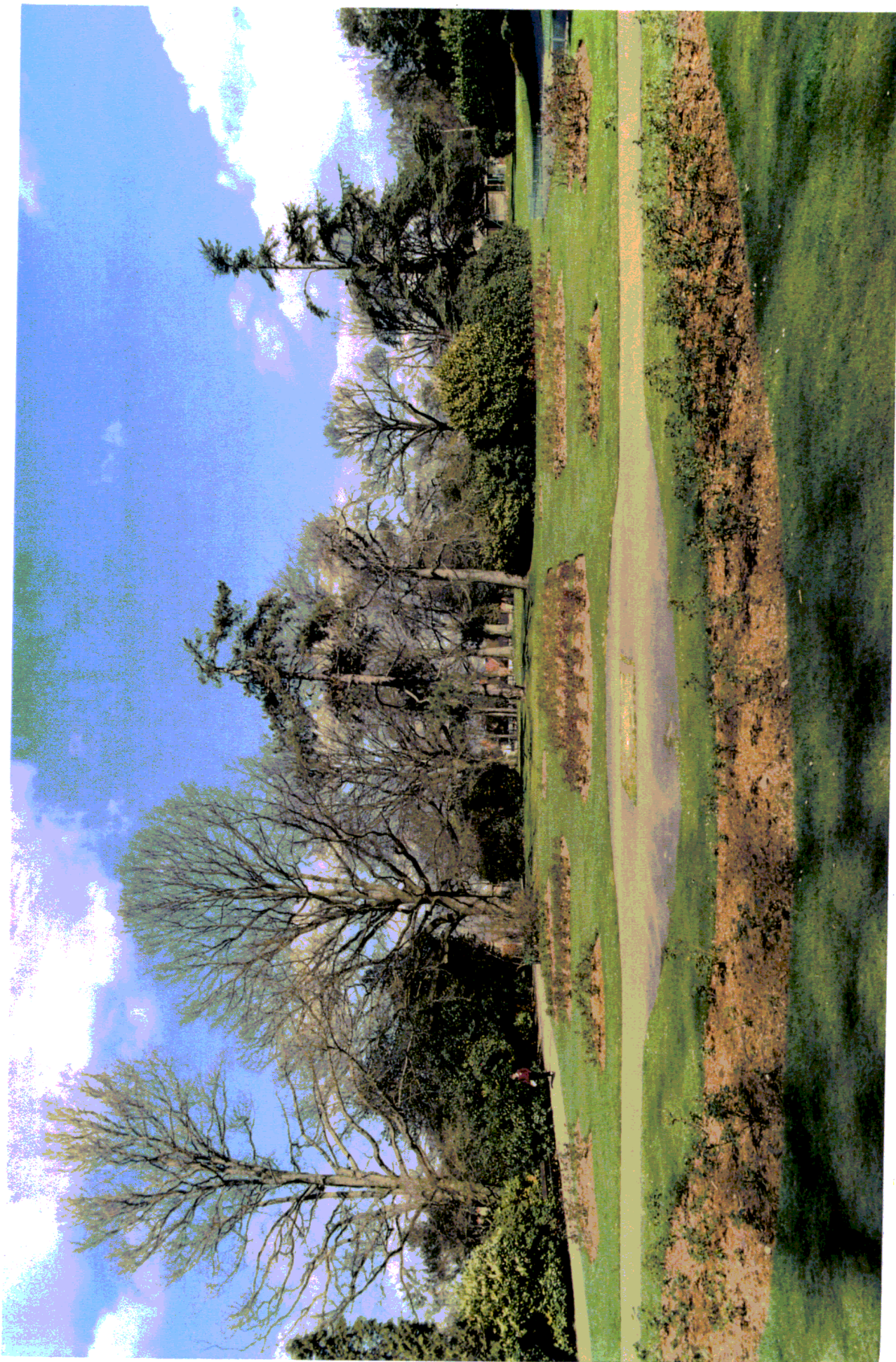
- TREES**
- A/1 ACER DAVIDI 'GEORGE FOHRESI' / Pere David's maple
 - A/2 MALUS spp / Bramley
 - A/3 MALUS x PURPUREA PENDULA / Purple Leaved Weeping Malus
 - F/4 PRUNUS 'PINK SHELL' / Ornamental Flowering Cherry
- SHRUBS**
- D/5 AZALEA LUTEUM
 - H/6 ARUNDINARIA VIRIDISTRATA / Yellow Variegated Bamboo
 - A/7 BERBERIS DARWINII / Darwin's Barberry
 - BCEF/8 BUXUS SUFFRUTICOSA / Edging Box
 - H/9 CAMELLIA ALBA SIMPLEX / Single White Camellia
 - BE/10 CARYOPTERIS ARTHUR SIMMONDS
 - A/11 CEONOTHUS GLOIRE DE VERSAILLES
 - B/12 CERATOSTIGMA PLUMBAGINOIDES
 - DG/13 CHOCISYA TERNATA / Mexican Orange
 - A/14 CISTUS CRISPUS / Cerise Sun Rose
 - BCEF/15 CISTUS PURPUREUS / Purple Sun Rose
 - EF/16 CISTUS SILVER PINK / Pink Sun Rose
 - A/17 CORNUS ELEGANTISSIMA / Silver Variegated Dogwood
 - H/18 CORNUS SPAETHII / Yellow Variegated Dogwood
 - A/19 COTINUS COGGYGRIA ROYAL PURPLE / Purple Leaved Smoke Tree
 - GH/20 CYTISUS PRAECOX ALBUS / Warmister Broom
 - F/21 DAPHNE MEZEREUM / Spurge Laurel
 - CF/22 DAPHNE LAUREOLA / Spurge Laurel
 - H/23 ELAEAGNUS PUNGENS MACULATA / Yellow Variegated Eleagnus
 - AH/24 EUONYMUS FORTUNEI VARIEGATUS
 - D/25 ESCALLONIA IVEYI
 - H/26 FATSIA JAPONICA
 - A/27 FUCHSIA MRS POPPLE
 - A/28 FUCHSIA RICARTONII
 - BCEF/29 FUCHSIA VERSICOLOR
 - H/30 GARRYA ELIPTICA
 - A/31 HEBE MRS WINDER
 - 32H HYDRANGEA ARBORESCENS ANNABELLE
 - A/33 HYDRANGEA PREZIOSA
 - ADG/34 HYPERICUM PATULUM HIDCOTE / St. John's Wort
 - A/35 JUNIPERIS SQUAMATA 'BLUE CARPET' / Scaly Leaved Nepal Juniper
 - AD/36 LAURUS NOBILIS / Sweet Bay
 - CE/37 LAVATERA OLBIA ROSEA
 - ABCE/38 LAVANDULA MUNSTEAD DWARF / Dwarf English Lavender
 - BCEF/39 LAVANDULA VERA / Dutch Lavender
 - D/40 LONICERA NITIDA BAGGESENS GOLD
 - 41 LONICERA STANDISHII
 - H/42 MAHONIA BEALEI
 - DH/43 PHILADELPHUS BELLE ETOILE / Mock Orange
 - A/44 PHOTINIA x FRASERI RED ROBIN
 - G/45 POTENTILLA DAHURICA ABBOTSWOOD / Cinquefoil
 - GH/46 POTENTILLA ELIZABETH / Cinquefoil
 - J/47 ROSA ICEBERG
 - A/48 ROSA MOYESII GERANIUM / Bottle Hip Rose
 - BCE/49 ROSA MUNDI / Striped Species Rose
 - A/50 ROSA RUBRIFOLIA / Pink Leaved Species Rose
 - C/51 ROSA RUGOSA ROSERIE DE LHAIE / Species Rose
 - B/52 ROSA RUGOSA SCABROSA / Species Rose
 - A/53 ROSA TUSCANY SUBERB / Old Shrub Rose
 - BEF/54 ROSMARINUS OFFICINALIS JESSOPS UPRIGHT / Upright Rosemary
 - A/55 ROSMARINUS TUSCANY BLUE / Rosemary
 - D/56 SAMBUCCUS PLUMOSA AUREA / Yellow Cut Leaved Elder
 - ADG/57 SANTOLINA VIRENS / Cotton Lavender
 - F/58 SARCOCCOCCA HUMILIS
 - H/59 SKIMMIA JAPONICA
 - D/60 SPARTIUM JUNCEUM / Spanish Broom
 - F/61 SYMPHORICARPOS x DOORENBOSII 'MOTHER OF PEARL'
 - A/62 TAXUS BACCATA / Common Yew
 - AC/63 VIBURNUM BODNANTENSE 'DAWN'
 - GH/64 VIBURNUM DAVIDII
- HERBACEOUS**
- CEF/65 AGAPANTHUS HEADBOURNE HYBRID / African Lily
 - A/66 AJUGA REPTANS PURPUREA / Purple Leaved Bugle
 - DH/67 ALCHEMILLA MOLLIS / Lady's Mantle
 - B/68 ALTHAEA / Hollyhock - mixed colours
 - H/69 ANEMONE JAPONICA ALBA / Wind flower
 - BCEF/70 ARTEMISIA ABROTANUM / Southernwood
 - H/71 ASPLENIDIUM SCOLOPENDRIUM / Hart's-Tongue
 - CF/72 ASTER FRIKARTII
 - FH/73 BERGENIA BRESSINGHAM WHITE
 - BE/74 BERGENIA CORDIFOLIA
 - A/75 BERGENIA SUNNINGDALE
 - EF/76 CAMPANULA LATIFOLIA ALBA / Giant Bellflower
 - A/77 CROCOSMIA LUCIFER / Deep Red Montbretia
 - BCF/78 DELPHINIUM ELATUM PACIFIC HYBRIDS
 - AC/79 DIANTHUS spp
 - BCEF/80 DIANTHUS DORIS / Modern Pinks
 - B/81 DIASCIA ELEGANS
 - F/82 DIGITALIS PURPUREA / Foxglove
 - F/83 EUPHORBIA CHARACIAS / Spurge or Milkweed
 - A/84 EUPHORBIA GRIFITHII FIREGLOW / Spurge or Milkweed
 - DG/85 EUPHORBIA POLYCHROMA / Spurge or Milkweed
 - H/86 EUPHORBIA ROBBIAE / Spurge or Milkweed
 - E/87 GERANIUM JOHNSONS BLUE / Blue Meadow Crane's-Bill
 - F/88 GERANIUM MACRORRHIZUM 'INGWERSENS VARIETY' / Pale Pink Crane's-Bill
 - CEF/89 GYPSOPHILA FLAMINGO / Pink Gypsophila
 - FH/90 HELLEBORUS CORSICUS / Corsican Hellebore
 - H/91 HOSTA FORTUNEI 'HYACINTHINA' / Plantain Lily
 - H/92 HOSTA ROYAL STANDARD / Plantain Lily
 - H/93 MISCANTHUS SINENSIS ZEBRINUS STRICTUS / Yellow Leaved Zebra Grass
 - ABE/94 NEPETA FAASSENII SIX HILLS GIANT / Catmint
 - A/95 PENSTEMON BLACKBIRD
 - A/96 PENSTEMON ISOPHYLLUS
 - A/97 PENSTEMON SOUR GRAPES
 - DF/98 PENSTEMON WHITE BEDDER
 - A/99 PEROVSKIA ATRIPLICIFOLIA / Russian Sage
 - FGH/100 PHLOX PANICULATA WHITE ADMIRAL
 - A/101 PULMONARIA 'CAMBRIDGE RED' / Red Lungwort
 - F/102 PULMONARIA spp / Lungwort
 - AC/103 SALVIA OFFICINALIS / Purple Sage
 - DGH/104 SALVIA OFFICINALIS 'ICTERINA' / Variegated Sage
 - A/105 SALVIA 'SUBERBA' / Sage
 - A/106 SCABIOSA CAUCASICA / Scabious or Pincushion Flower
 - ABC/107 SEDUM SPECTABILE 'AUTUMN JOY' / Stonecrop Flower
 - AC/108 STACHYS LANATA / LAMB'S TONGUE
 - A/109 THYMUS VULGARIS VARIEGATA / White Variegated Thyme
 - BG/110 VERBASCUM NIGRUM / Mullein
 - AC/111 VERBENA PATAGONICA
 - CF/112 VIOLA ODOURATA / Sweet Violet
- BULBS**
- H/113 GALANTHUS / SNOWDROP
 - DHF/114 HEMEROCALLIS FLAVA / Day Lily
 - D/115 HEMEROCALLIS MARION VAUGHN / Day Lily
 - BCEF/116 HYACINTH - Blue Variety
 - BCEF/117 HYACINTH - Pink Variety
 - DG/118 IRIS spp / Dwarf Variety
 - A/119 IRIS GERMANICA spp / Bearded Yellow Iris
 - ACDE/120 IRIS PALLIDA DALMATICA
 - ACE/121 IRIS PALLIDA DALMATICA VARIEGATA / Tall Variegated Iris
 - F/122 IRIS UNGUICULARIS
 - AD/123 LILIUM spp / Red or Orange Lily
 - GH/124 LILIUM spp / White Lily
 - B/125 MUSCARI ARMENICUM / Grape Hyacinth
 - D/126 NARCISSUS TETE A TETE / Daffodil
- CLIMBERS**
- A/127 CLEMATIS MRS. CHOLMONDELEY
 - ADH/128 HEDERA HELIX SAGITTIFOLIA / Spear Leaved Ivy
 - GH/129 LONICERA SEROTINA / Honeysuckle
 - H/130 PYRACANTHA SOLER D'OR / Firethorn
 - 131 ROSA ALOHA / Climber Rose
 - A/132 ROSA BREATH OF LIFE / Climber Rose
 - A/133 ROSA DANSE DE FER / Climber Rose
 - ADGH/134 WISTERIA SINENSIS
 - A/135 VITIS COIGNETIAE / Grape Vine

BED J

Another leisure service from
HORSHAM DISTRICT COUNCIL

6. PHOTOGRAPHIC RECORD OF PROGRESS

A pictorial history of the development of Park House Garden from its inception in 1990 through to its opening and public use in summer 1991.



The chosen site - March 1990



From the 'West Sussex County Times', 11 January 1991.

The photograph on the preceding page appeared alongside this article

A growing project

ANOTHER "remarkable" project in redeveloping Horsham got underway this week when the first turf of the scented garden for the disabled and visually impaired was cut in the park.

Dignitaries from the district council and Sun Alliance — joint sponsors of the £80,000 scheme — gathered in the area behind Park House to watch as wheelchair-bound Sue Cheater wielded the shovel to fine effect.

Mrs Cheater, who has multiple sclerosis, is the treasurer of the newly-retitled Horsham Access Committee (HAC). The organisation used to be known as the Horsham Access Steering Group for the disabled and has been closely involved in all aspects of the town's redevelopment.

Eight HAC members, including the energetic chairman, Brian Cheater, Doug Field and his guide dog, Bruno, plus founder members, Maggie Oxby and Pat Dark, attended the function. Also on hand were Elizabeth Day, Reg Gibson and Norma Elston.

The garden will be officially opened in June and it will be known as Park House Garden. It is adjacent to the refurbished conservatory cafe/coffee shop which was opened last year and the shop's patio area will be incorporated into the garden.

District council chairman, Marjorie Ward, presided at the opening. She said every detail of the garden had been carefully considered to make the area accessible and interesting to people with all sorts of disabilities.

However, she stressed that the garden ought not to be seen as an enclave just for the disabled. "In my experience there is nothing that people with disabilities hate more than being treated as different."

She said the garden would be "an oasis of peace almost in the middle of our busy town". Mrs Ward paid tribute to Sun Alliance for contributing more than £60,000 towards the cost of the garden saying the company's involvement in the town centre would provide further evidence of the quality of its investment in the district.

The chairman also welcomed the HAC's input and said the group's enthusiastic involvement in the design of the garden had been invaluable.

Scheme tribute

THERE were tributes to all the members of the Park House Garden project committee.

These included top executives from Sun Alliance, council officers and members and Richard Hannay from Land Use Consultants Ltd, who designed the garden in conjunction with the office of district architect, Jeff Wailing.

Construction of the garden should take about five months and it will be carried out by the construction division of local company, Woodcross Developments Ltd, which is based in the Bishopric.

Major features

YVONNE Marsland, the council's green-fingered countryside and landscape manager, pointed out the major features of the garden, a sketch of which is published alongside.

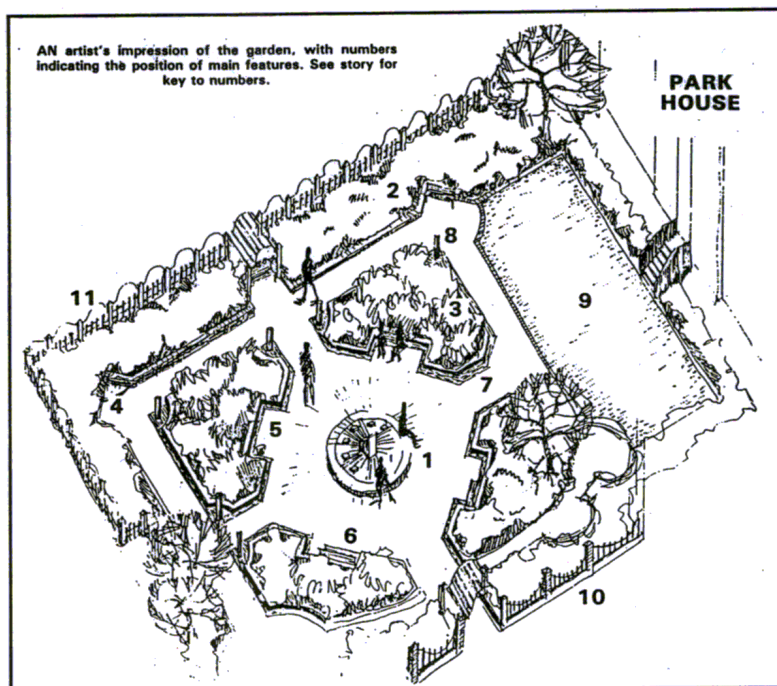
1: Sundial sculpture. 2 and 3: Scented flower beds; 2 will be raised and 3 will comprise what Yvonne calls formal beds with box-hedging at ground level.

4: A "secret" fountain, which is supposed to surprise visitors.

5: Wheelchair bays. 6: Benches. 7: Tapping strips; to assist blind and partially-sighted people. 8: Marble pillars; which will also aid the blind. 9: A lawn which can be used for entertainments purposes during the summer. 10: Brick wall with railings. 11: Ornamental fence.

Snowdon's support

AMONG those who have expressed interest and support for the Park House Garden project has been Lord Snowdon, a prominent campaigner on behalf of disabled people. He is monitoring progress on the garden and hopes to attend the opening ceremony in the summer.





Construction underway - February 1991



February 1991







Official opening - 29 June 1991

From the 'West Sussex County Times'
5 July 1991.

Snowdon launches gardens



HORSHAM'S Park House Garden is a "magnificent example" of what can be achieved and provided for the disabled, according to the Earl of Snowdon.

The renowned photographer and former husband of Princess Margaret — whose family home is at Nyman's Gardens at Handcross — opened the new £80,000 garden on Saturday morning.

Situated to the rear of the historic Park House, the garden was designed specially to meet the needs of the disabled and visually impaired.

After being welcomed by district council chairman, Sheila van Den Bergh, Lord Snowdon said he felt very much at home in Horsham. His mother still lives at Nyman's Gardens.

He told the assembled gathering of the

LORD SNOWDON at Saturday's ceremony in Horsham with designer Richard Hannay and council chairman Sheila van Den Bergh.

run-ins he had had with members of the Royal Horticultural Society over the way they used to treat disabled visitors to the Chelsea Flower Show. At one point wheelchairs could not be taken in.

"There was a big row over that and now people with wheelchairs are not only allowed, but they are positively welcomed." There was also a time when guide dogs were barred from the show.

Visually impaired and blind people had to leave their dogs at a point and they were then taken around the exhibition by an able-bodied guide. "I objected to that, because it meant that disabled people had no choice."

That policy too had now been changed and

blind people could decide for themselves whether they wanted to take their guide dogs along or not.

In the sense that Horsham Park House Garden gave disabled and able-bodied people an equal opportunity to enjoy the surroundings, it set a tremendous example to other organisations and authorities, he added.

The garden features a variety of scented planting — so that blind and partially sighted people can enjoy the aroma — and it has raised flower beds for wheelchair users. The scheme was funded by Sun Alliance.

The centrepiece of the design — at the intersection of the main pathways — is a



The garden in use - July 1991







A visit by Steyning & District Association for the Disabled

Please reply to: 1 Ashleigh Road
Horsham
West Sussex
RH12 2LE

16th August 1991

Chief Executive
Horsham District Council
Park House
North Street
Horsham
West Sussex
RH12 1RL

Dear Mr Pearson

Re: Park House Garden

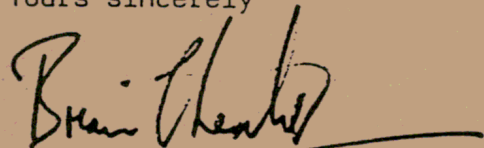
I write to express the Horsham Access Committee's delight at the attractive Park House Garden in Horsham Park.

The way in which our Committee has been consulted in the development of the project is greatly appreciated. The resulting special features have enabled the visually impaired and people with disabilities to enjoy the garden more easily so that the garden has become a popular focus for many of our local groups.

I have visited the garden regularly throughout the Summer myself and have been struck by its manifest success, being constantly enjoyed by the disabled and able-bodied alike.

Park House Garden has become an asset which the Council can be proud of and an example which other Councils would do well to follow.

Yours sincerely



Mr B J Cheater
CHAIRMAN OF HORSHAM ACCESS COMMITTEE

Hon Secretary

Mrs Norma Elston • 19 Pollards Drive • Horsham • West Sussex RH13 5HQ